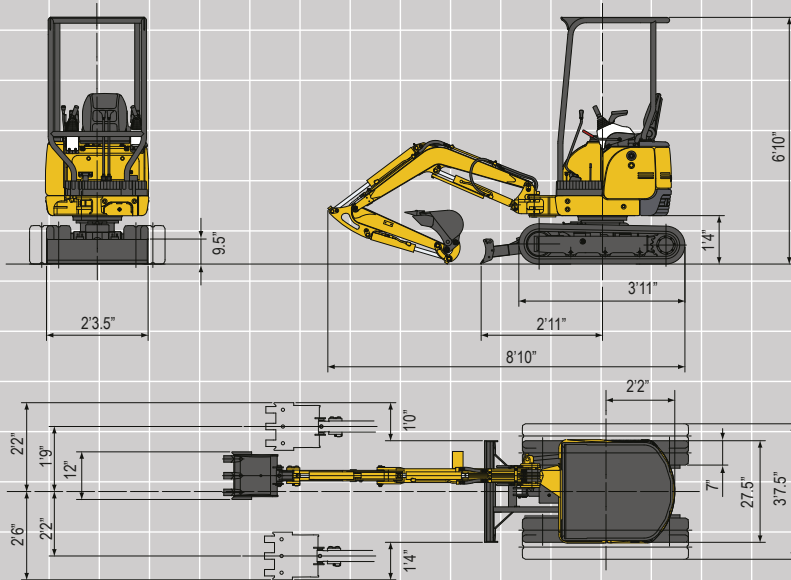


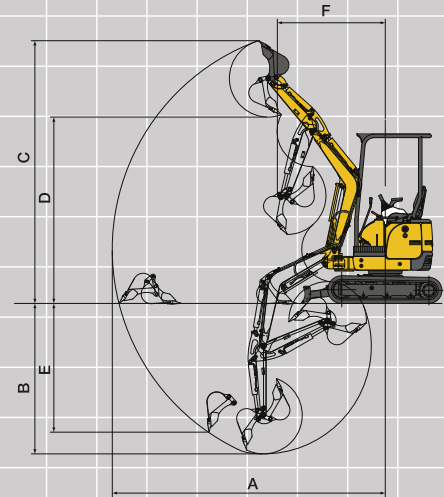




**■ Dimensions**



**■ Working Range**



A Max. digging radius	9'9"
B Max. digging depth	5'2"
C Max. digging height	9'0"
D Max. dumping height	6'6"
E Max. vertical digging depth	3'10"
F Min. front turning radius	4'0"
At right boom swing	3'1"

**■ 9VXB Specifications**

Model	9VXB
<b>• Performance</b>	
Bucket capacity	.8 cu. ft.
Bucket width	12"
Operating weight	2060 lbs
Transportation weight	1885 lbs
Swing speed	8.7 rpm
Travel speed (low/high)	1.1/2.2 mph
Gradeability	30°
Ground pressure	3.8 psi
Max.bucket digging force	2360 lbs
<b>• Boom swing system</b>	
Type	Boom offset with hydraulic cylinder
Swing angle (L/R)	50° / 90°
<b>• Hydraulic system</b>	
Pressure	2350 psi
Pump type	Gear
Auxiliary Flow	5 gpm
<b>• Dozer blade</b>	
Size	27.5" x 11"
Lift above ground / Drop below ground	9" / 8"

**Expandable Undercarriage  
27.5"-37.5" Variable Width**



**Retractable  
Blade Extensions**



**Bucket Options**

• Bucket
8"
12"
16"
18"



**CONNECTICUT**

410 Burnham St., South Windsor, CT 06074

Phone: 860-289-2020

**MASSACHUSETTS**

120 Interstate Dr, West Springfield, MA 01089

Phone: 413-363-0780