

15VX	Applicable machine	LIFTING CAPACITY	17-1
	WR003011~		

LOAD RATING CHART (SAE method)

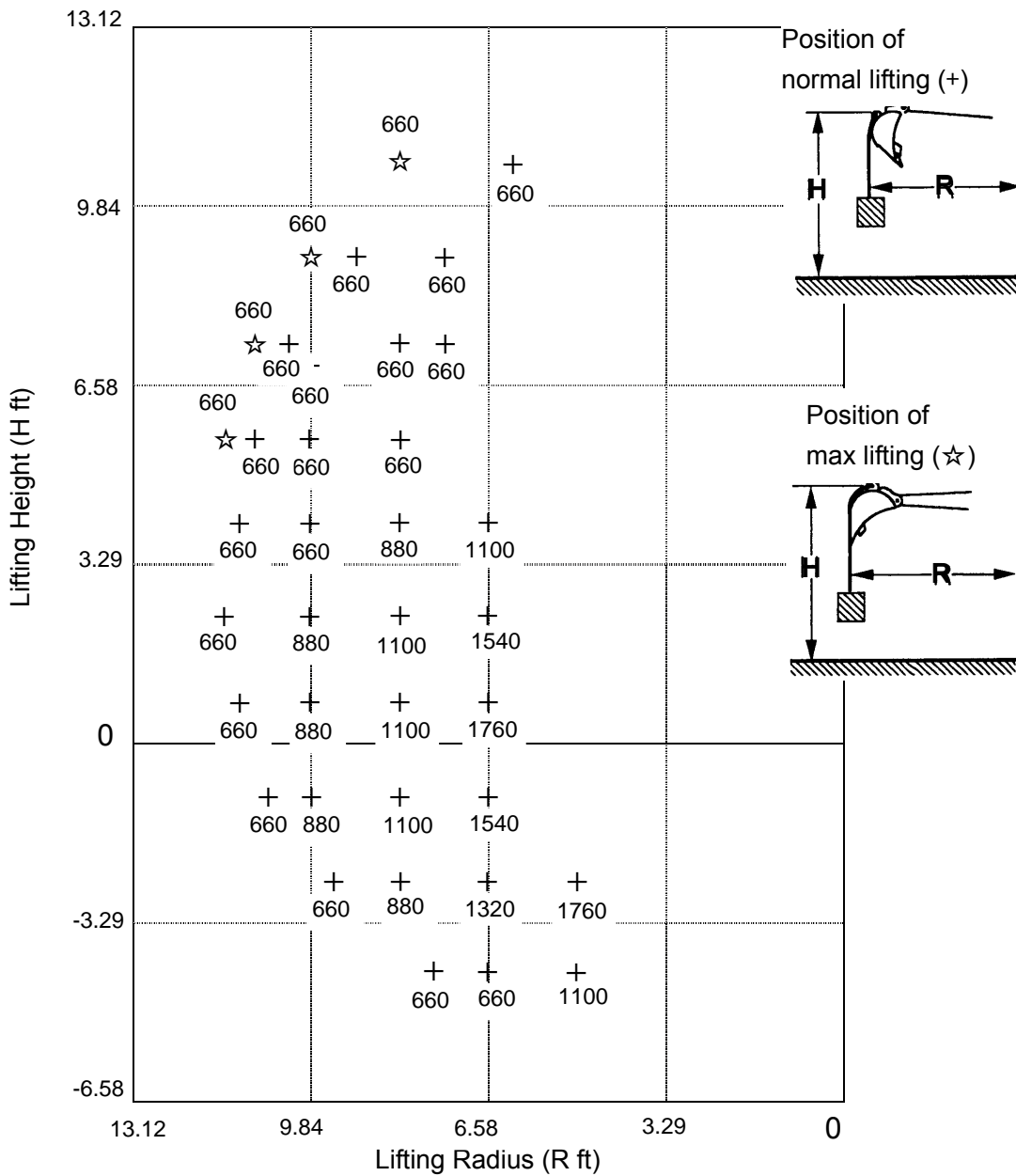
Note : At front over end and the Blade fulcrum with equipped standard arm.

Rated loads do not exceed 87% of hydraulic capacity or 75% stability.

Unit : lbs.

+ : Lifting height

☆ : Maximum lifting radius



15VX	Applicable machine	LIFTING CAPACITY	17-3
	WR003011~		

LOAD RATING CHART (SAE method)

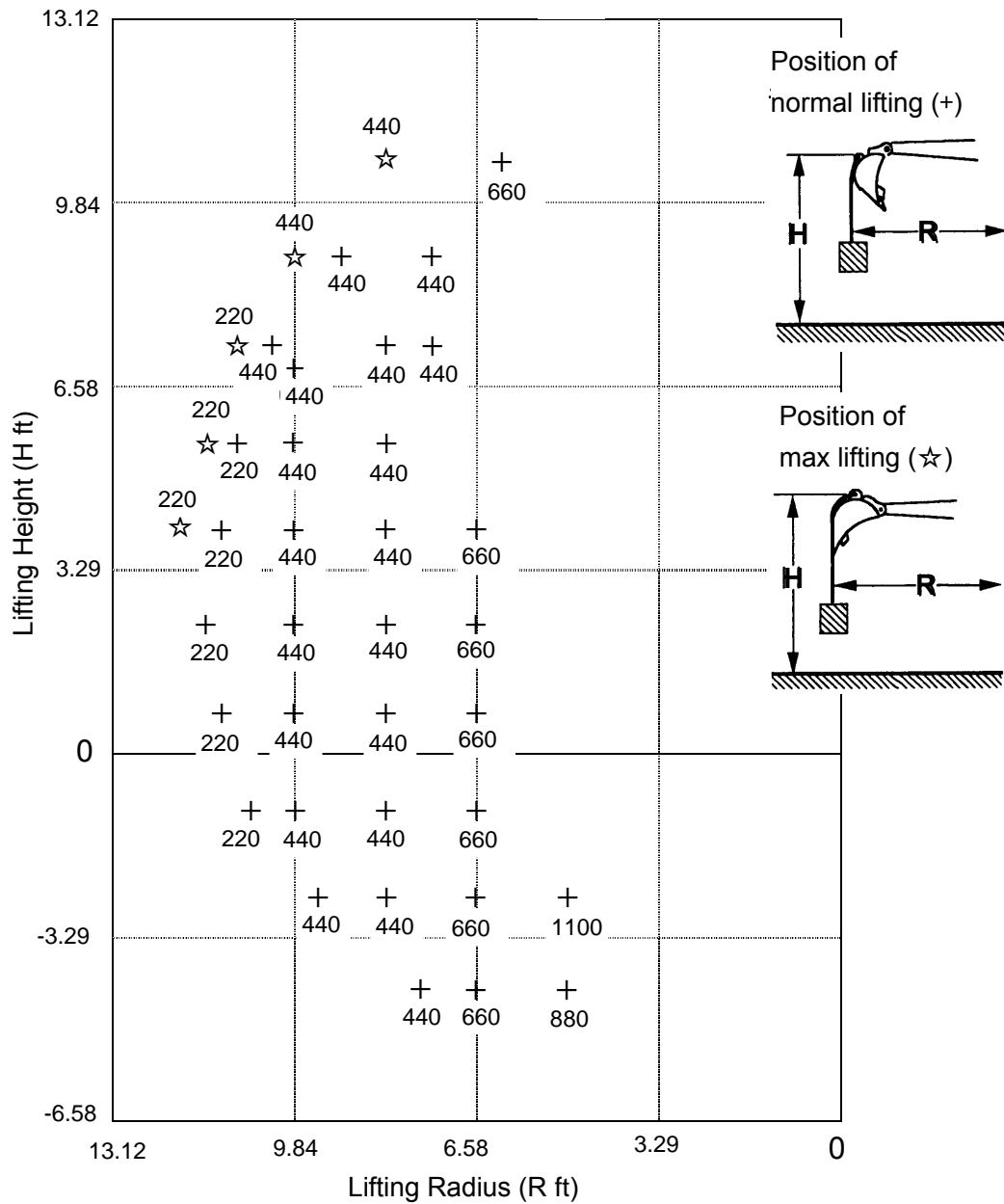
Note : At over side; at crawler width expansion; with equipped standard arm.

Rated loads do not exceed 87% of hydraulic capacity or 75% stability.

Unit : lbs.

+ : Lifting height

☆ : Maximum lifting radius



15VX	Applicable machine	LIFTING CAPACITY	17-4
	WR003011~		

LOAD RATING CHART (SAE method)

Note : ADD. CWT specification

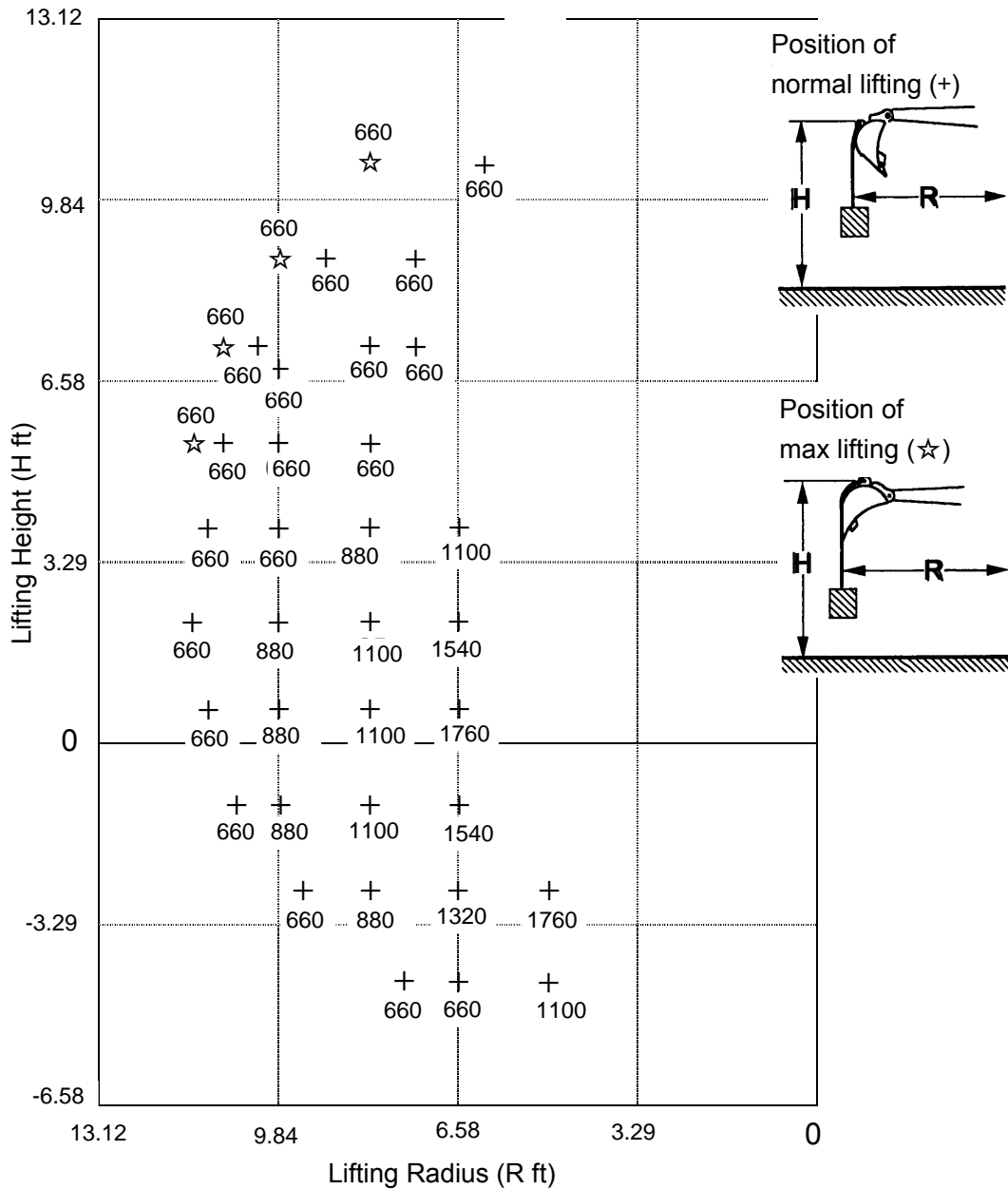
At front over end and the blade fulcrum with equipped standard arm.

Rated loads do not exceed 87% of hydraulic capacity or 75% stability.

Unit : lbs.

+ : Lifting height

☆ : Maximum lifting radius



15VX	Applicable machine	LIFTING CAPACITY	17-5
	WR003011~		

LOAD RATING CHART (SAE method)

Note : ADD. CWT specification

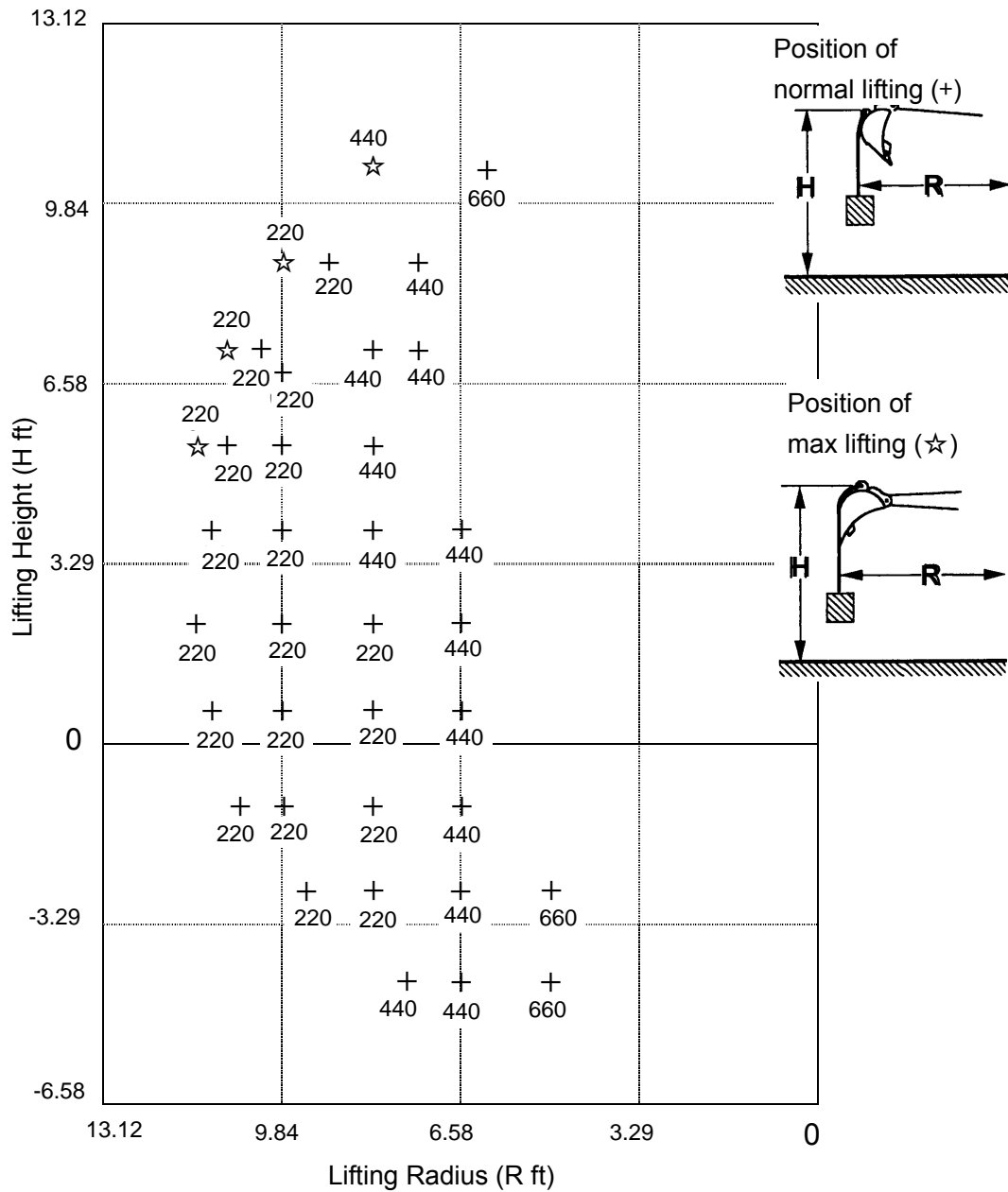
At over side ; at crawler width contraction; with equipped standard arm.

Rated loads do not exceed 87% of hydraulic capacity or 75% stability.

Unit : lbs.

+ : Lifting height

☆ : Maximum lifting radius



15VX	Applicable machine	LIFTING CAPACITY	17-6
	WR003011~		

LOAD RATING CHART (SAE method)

Note : ADD. CWT specification

At over side; at crawler width expansion; with equipped standard arm.

Rated loads do not exceed 87% of hydraulic capacity or 75% stability.

Unit : lbs.

+ : Lifting height

☆ : Maximum lifting radius

