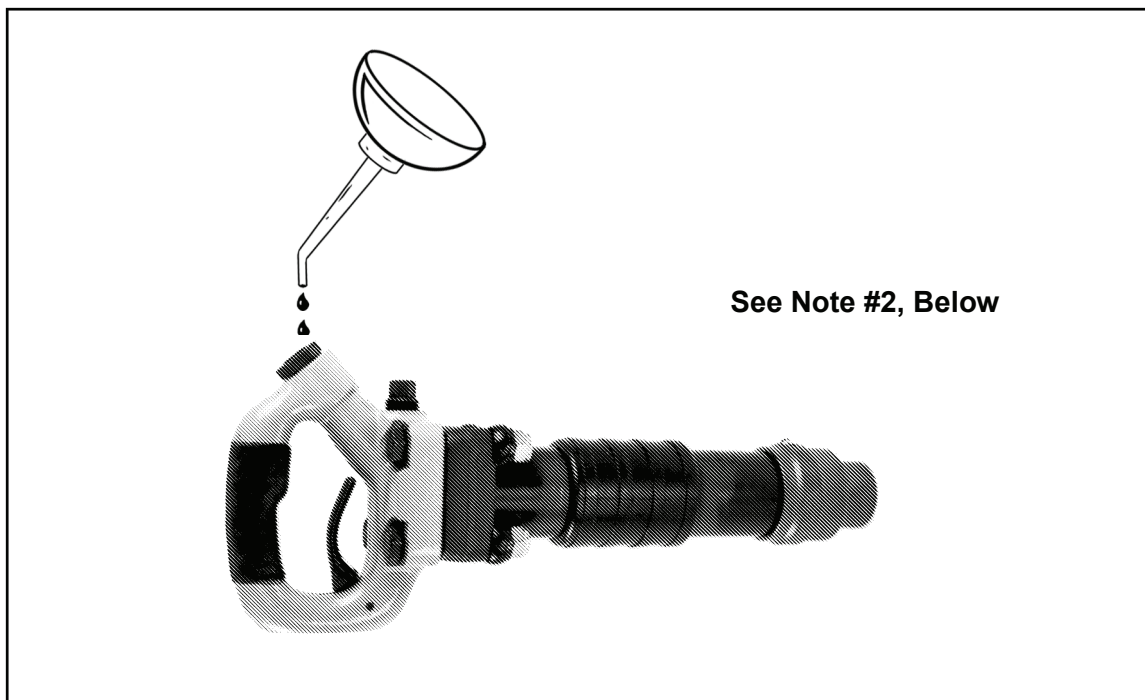


CP 4132



General Safety Rules

- Before using the tool, read through these instructions carefully.
 - Also read the Red Safety Instructions thoroughly.
 - For your safety, the tool must not be modified.
 - Use approved personal safety equipment.
 - Use Atlas Copco Genuine Parts only.
- Always replace worn or damaged warning stickers.

Notes:

- 1: Tighten bolts regularly, loose bolts will cause premature breakage
- 2: Add 5ml of oil into the air inlet, twice per shift. See table for recommended lubricants.

Safety Warnings—Symbols in these Instructions

Pay special attention to sections in these documents dealing with safety.
If you see either of these symbols:



WARNING! A danger, or hazardous procedure which CAN lead to serious injury, or worse.



CAUTION A risk, or risky procedure which CAN lead to injury, or damage to the tool.

Before Starting

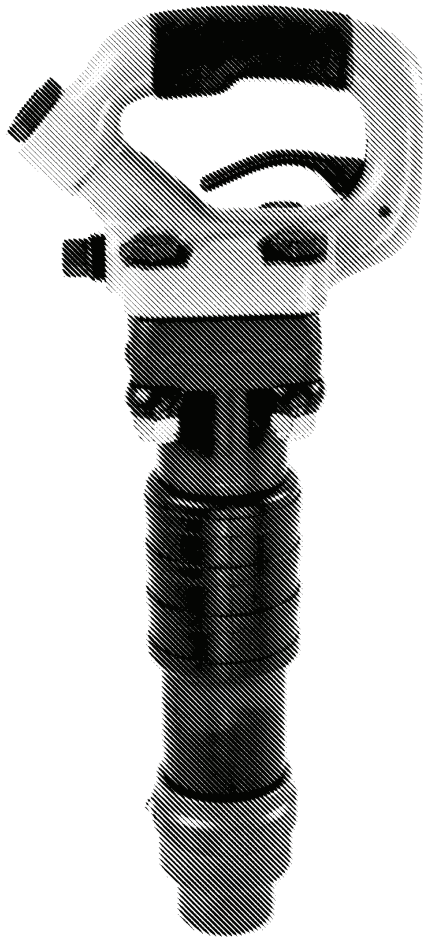
Make sure you have:

- the correct hose size and length.
- checked for damage to air line and couplings.
- all air connectons correctly tightened.
- the correct operating pressure (max 100 psi). Higher pressure can be dangerous and damage the tool.
- blown the air line clean.
- oiled the hammer.
- a steel with the correct shank size.
- checked that the steel is securely latched. Repair any tool with poor retention.
- use proper safety gear: boots, helmet, gloves and ear protection are the minimum.

Recommended lubricants

Lubricant	Temperature range °C	Viscosity grade
Synthetic AIR-OIL	-30 to +50	ISO VG 46-100
Mineral Oil	-20 to +15	ISO VG 32-46
Mineral Oil	+15 to +35	ISO VG 46-100

CP 4132



Specifications CP 4132-4

Net Weight	7 kg	15 lbs
Length	432 mm	17 in
Bore	29 mm	1.125 in
Stroke	102 mm	4 in
Blows per minute	1800	1800
Chuck Sizes	14.8 mm Hex 17.5 mm Rnd	.580 in Hex .680 in Rnd
Air Inlet (NPT)	10 mm	3/8 in
Air Consumption*	.94 m ³ /m	33.23 cfm

Specifications CP 4132

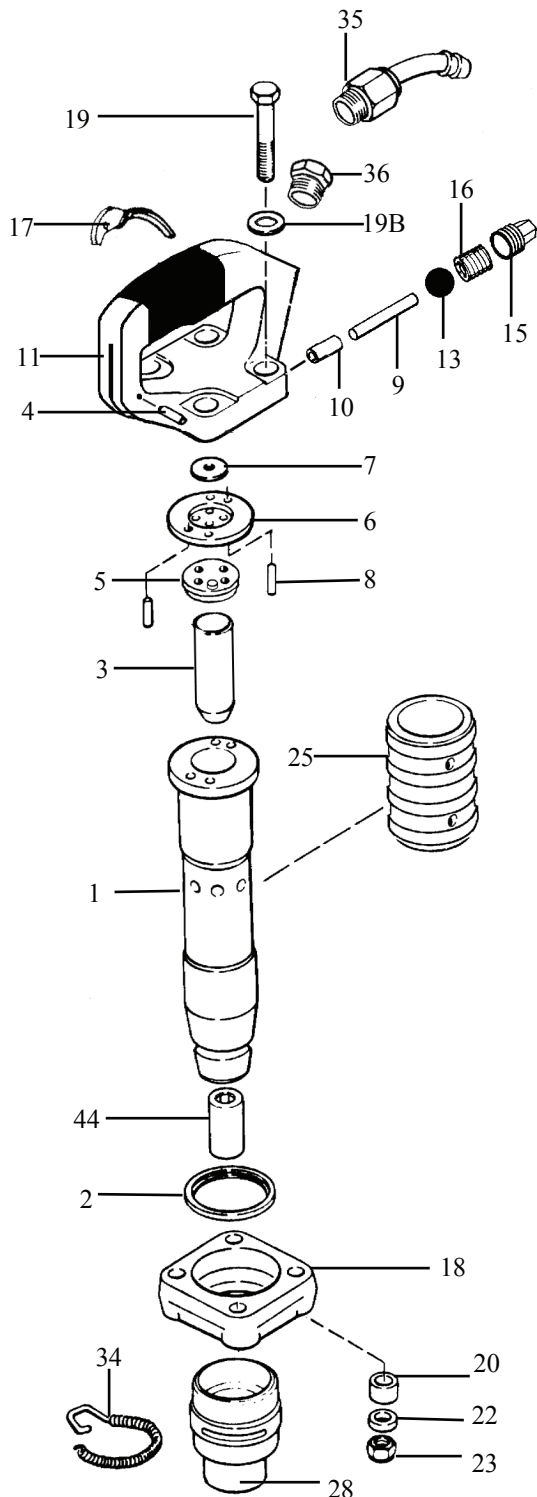
Net Weight	6.4 kg	14 lbs
Length	387 mm	15.25 in
Bore	29 mm	1.125 in
Stroke	75 mm	3 in
Blows per minute	2200	2200
Chuck Sizes	14.8 mm Hex 17.5 mm Rnd	.580 in Hex .680 in Rnd
Air Inlet (NPT)	10 mm	3/8 in
Air Consumption*	.89 m ³ /m	31.5 cfm

*estimated



CHIPPING HAMMER

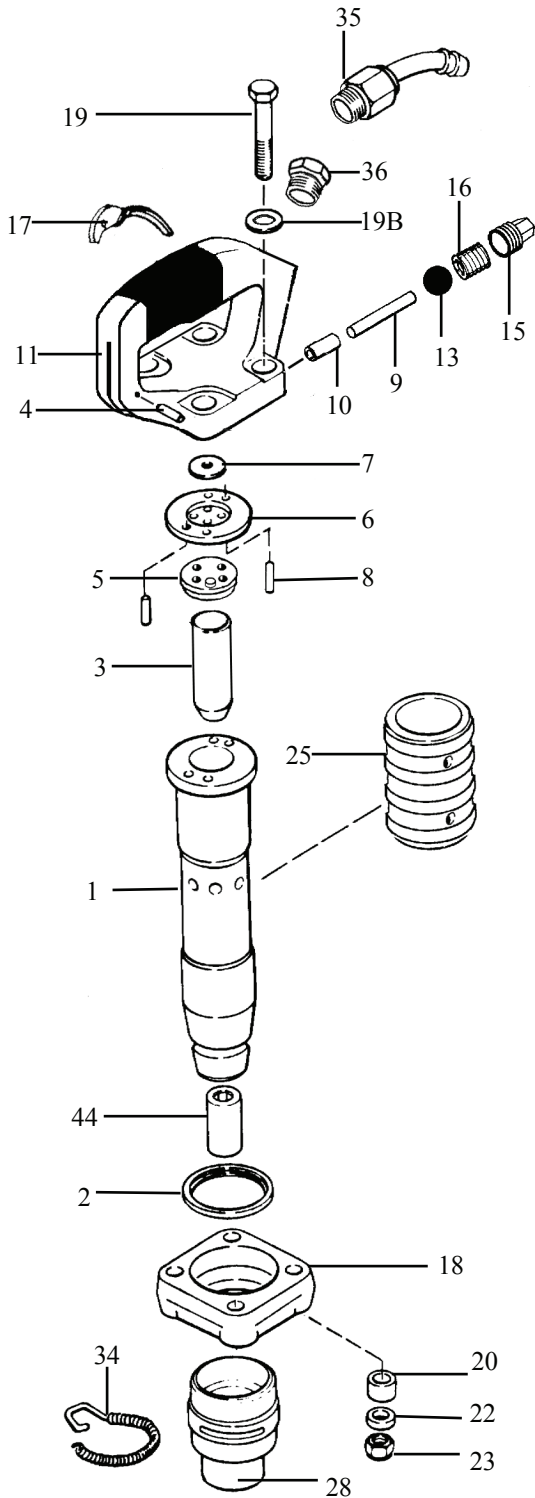
CP 4132 -4



INDEX	PART	DESCRIPTION
1	9245-9983-62	BARREL 4"
2	9245-9963-10	LOCK RING BUMPER
3	9245-9963-63	PISTON 4"
4	9245-9983-64	FULCRUM PIN
5	9245-9963-60	BUMPER VALVE SEAT
6	9245-9983-65	VALVE SPACER
7	9245-9963-50	VALVE PLATE
8	9245-9964-20	VALVE DOWEL (2)
9	9245-9983-67	PUSH PIN
10	9245-9967-00	PUSH PIN BUSHING
11	9245-9983-68	HANDLE BARE
NS	9245-9983-69	HANDLE COMPLETE
13	9245-9964-80	THROTTLE VALVE BALL
15	9245-9965-40	THROTTLE VALVE PLUG
16	9245-9965-30	THROTTLE VALVE SPRING
17	9245-9987-14	TRIGGER
18	9245-9983-70	FLANGE
19	9245-9983-71	HANDLE BOLT (4)
19B	9245-9983-72	SPRING WASHER (4)
20	9245-9983-73	BUMPER WASHER (4)
22	9245-9983-74	HANDLE BOLT SPACER (4)
23	9245-9983-75	HANDLE BOLT NUT (4)
25	9245-9964-40	EXHAUST DEFLECTOR
28	9247-9853-50	OVAL COLLAR RETAINER
34	9245-9964-90	RETAINER SPRING
35	9245-9965-00	SWIVEL(7/8 - 24, 1/2" HOSE BARB)
36	9245-9965-20	HANDLE BUSHING
44	9245-9965-80	BUSHING FOR ROUND SHANK (.680")
44	9245-9965-90	BUSHING FOR HEX SHANK (.580")

CHIPPING HAMMER

CP 4132



INDEX	PART	DESCRIPTION
1	9245-9983-61	BARREL 3"
2	9245-9963-10	LOCK RING BUMPER
3	9245-9963-30	PISTON 3"
4	9245-9983-64	FULCRUM PIN
5	9245-9963-60	BUMPER VALVE SEAT
6	9245-9983-65	VALVE SPACER
7	9245-9963-50	VALVE PLATE
8	9245-9964-20	VALVE DOWEL (2)
9	9245-9983-67	PUSH PIN
10	9245-9967-00	PUSH PIN BUSHING
11	9245-9983-68	HANDLE BARE
NS	9245-9983-69	HANDLE COMPLETE
13	9245-9964-80	THROTTLE VALVE BALL
15	9245-9965-40	THROTTLE VALVE PLUG
16	9245-9965-30	THROTTLE VALVE SPRING
17	9245-9987-14	TRIGGER
18	9245-9983-70	FLANGE
19	9245-9983-71	HANDLE BOLT (4)
19B	9245-9983-72	SPRING WASHER (4)
20	9245-9983-73	BUMPER WASHER (4)
22	9245-9983-74	HANDLE BOLT SPACER (4)
23	9245-9983-75	HANDLE BOLT NUT (4)
25	9245-9964-40	EXHAUST DEFLECTOR
28	9247-9853-50	OVAL COLLAR RETAINER
34	9245-9964-90	RETAINER SPRING
35	9245-9965-00	SWIVEL(7/8 - 24, 1/2" HOSE BARB)
36	9245-9965-20	HANDLE BUSHING
44	9245-9965-80	BUSHING FOR ROUND SHANK (.680")
44	9245-9965-90	BUSHING FOR HEX SHANK (.580")